

START UP

NOTE: There is no need to “break-in” your compressor. It has been tested and run at the factory by qualified personnel.

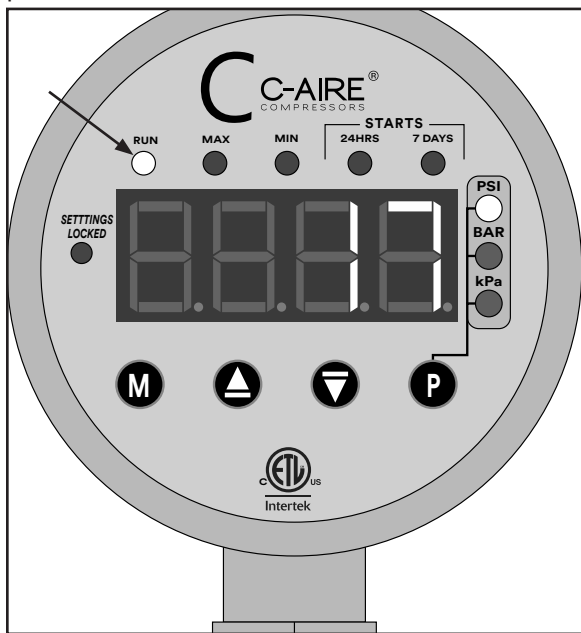
NOTE: S163/S253/S418 - Remove the air filter when filling systems near maximum capacity. The check valve unloader orifice will continuously bleed a small amount of air while the compressor is running.

When operating the compressor for the first time, do the following:

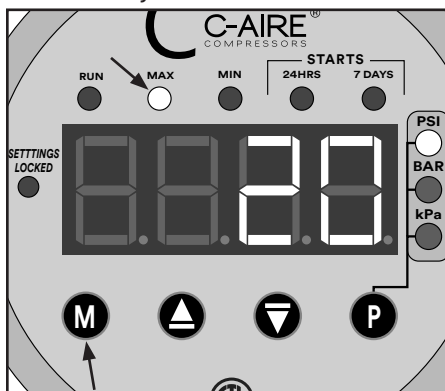
1. Perform an inspection of the compressor to ensure there are no obstructions that might interfere with moving parts.
2. Connect the compressor to the power source (the compressor will start).
3. Ensure compressor shuts off at desired pressure.

DIGITAL AMD OPERATING INSTRUCTIONS FOR S110, S164, & S281 MODELS

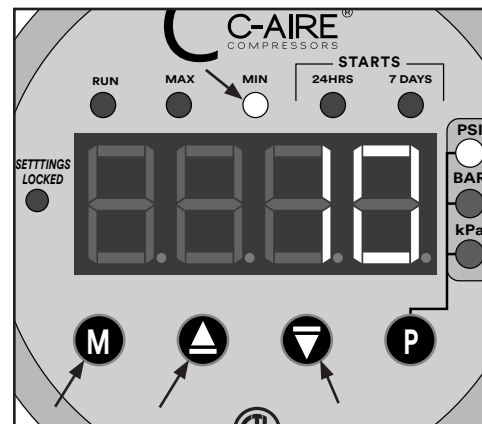
This Digital AMD has 5 different modes of operation. When it is powered on, it starts in the **RUN** mode and will display the current pressure.



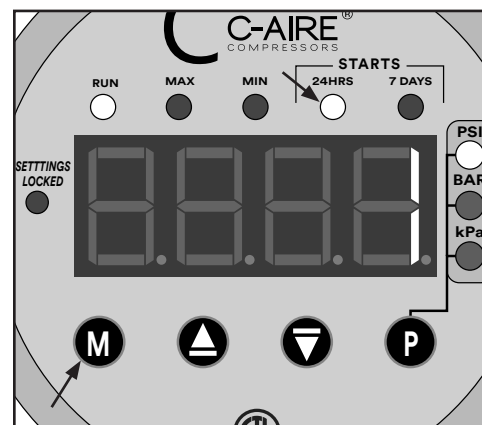
Pressing the **M** mode button once will switch it to the maximum pressure setting, (or the pressure at which the compressor turns off). At this point you are able to adjust the maximum/turn off pressure. When the **MAX** indicator is on, the arrow buttons **▲** **▼** can perform a +1/-1 change to the set value. The compressor will not run in this mode. If the compressor remains in this mode for 60 seconds with no adjustments, it will automatically revert back to the **RUN** mode. Range: 10-55 PSI.



Pressing the **M** mode button a second time will switch it to the minimum pressure mode, this is the minimum pressure the system will reach before it turns on. At this point you are able to adjust the minimum/turn on pressure. When the **MIN** indicator is on, the arrow buttons **▲** **▼** can perform a +1/-1 change to the set value. If the compressor remains in this mode for 60 seconds with no adjustments, it will automatically revert back to the **RUN** mode. Range: 5-50 PSI. **Note:** the upper and lower limits have a minimum differential of 5 PSI.



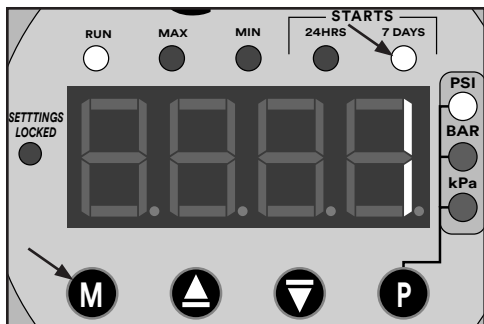
Press the **M** mode button a third time and the **24HRS** indicator will display the total number of starts in the last 24 hours (The counter will not measure time if the unit has no power).



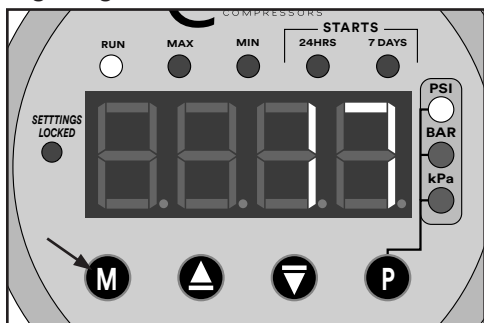
(DIGITAL AMD INSTRUCTIONS CONTINUED ON NEXT PAGE)

DIGITAL AMD OPERATING INSTRUCTIONS (CONTINUED)

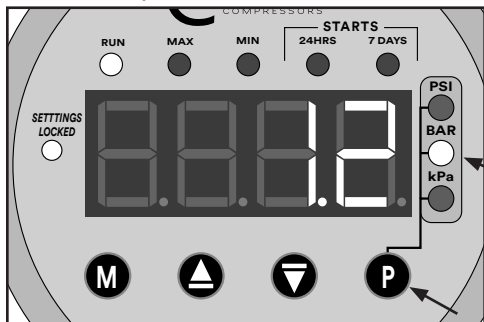
Pressing the **M** mode button a fourth time, the **7DAYS** indicator will display the total number of starts in the last 7 days (The counter will not measure time if the unit has no power).



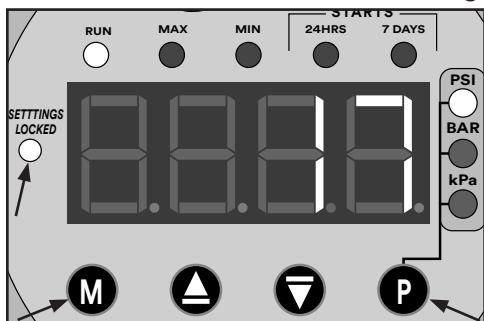
Pressing the **M** mode button a 5th time brings it back to the beginning.



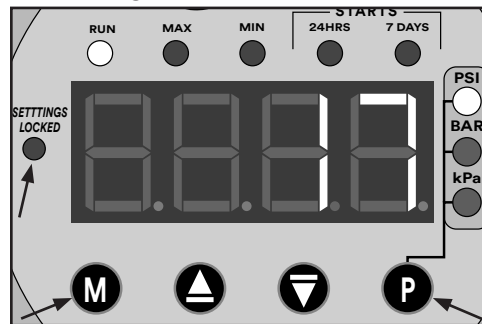
When in the **RUN** state, press the **P** pressure button to toggle between the pressure units of measure **PSI**, **BAR** and **kPa**.



To lock the settings, hold the **M** and the **P** simultaneously for 3 seconds until the **SETTINGS LOCKED** light is illuminated.

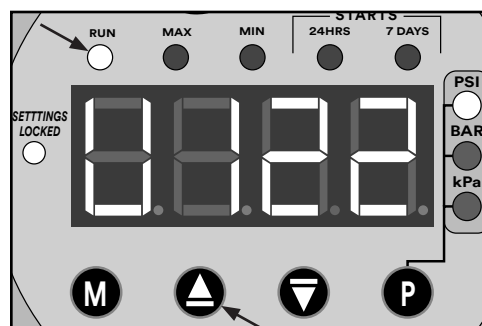


To unlock, repeat the previous process until the **SETTINGS LOCKED** light turns off.

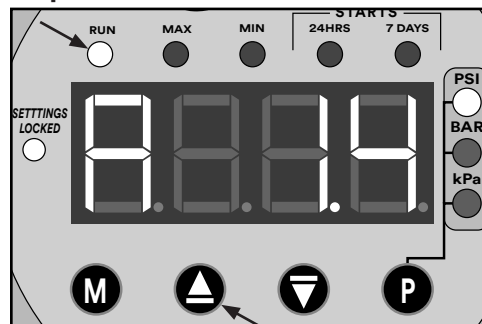


To display the **Volts** and **Amps**, when in the **RUN** mode, press the **▲** up arrow button once and it will display the Volts and press it again to display the Amps.

Volts



Amps



NOTE: After 60 seconds of inactivity in any mode, the unit will revert back to the **RUN** mode.